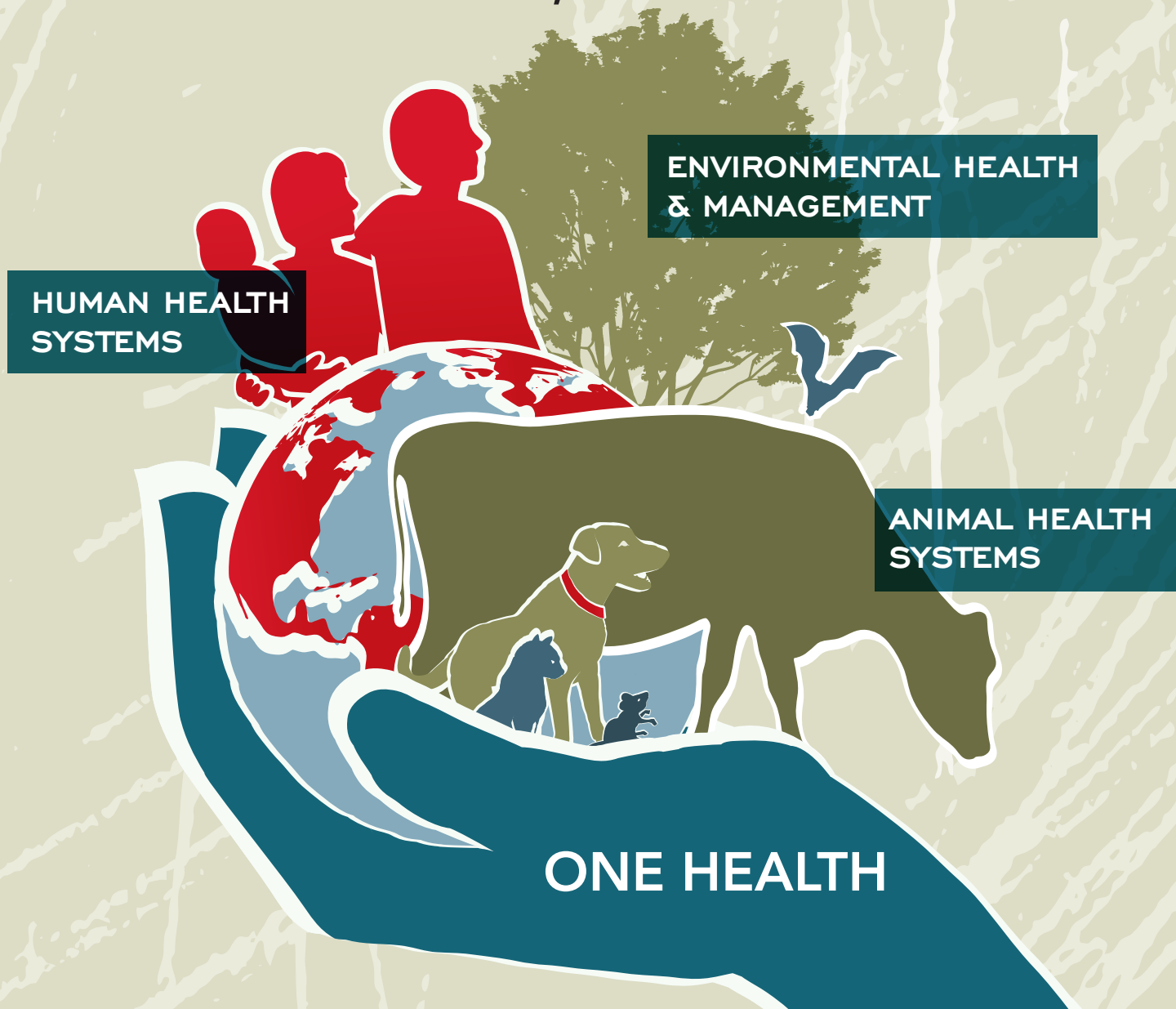


REGISTER NOW DECEMBER 3 & 4, 2018

# APPLICATION OF THE ONE HEALTH APPROACH TO GLOBAL HEALTH CENTERS

ALBERT EINSTEIN COLLEGE OF MEDICINE  
PRICE CENTER • 1301 MORRIS PARK AVENUE  
Bronx, NY 10461



One Health recognizes that the health of people is connected to the health of animals and the environment. It is an approach to designing and executing programs and research in which a number of sectors communicate and work together to achieve better public health outcomes.

**[To register go to www.eeds.com/live/418145](http://www.eeds.com/live/418145)**

For information about agenda and hotel, etc go to:  
[einstein.yu.edu/centers/global-health/events/one-health-approach.aspx](http://einstein.yu.edu/centers/global-health/events/one-health-approach.aspx)

For more information email [jill.raufman@einstein.yu.edu](mailto:jill.raufman@einstein.yu.edu)

**Intended Audience:** Infectious Diseases, internal medicine physicians and Veterinary medicine, environmental health, Public health

**ACCME Statement:** Albert Einstein College of Medicine of is accredited by the Accreditation Council for Continuing Medical Education (ACCME) to provide continuing medical education for physicians.

**AMA Statement:** Albert Einstein College of Medicine designates this live activity for a maximum of 10.5 AMA PRA Category 1 Credits™. Physicians should claim only the credit commensurate with the extent of their participation in the activity.